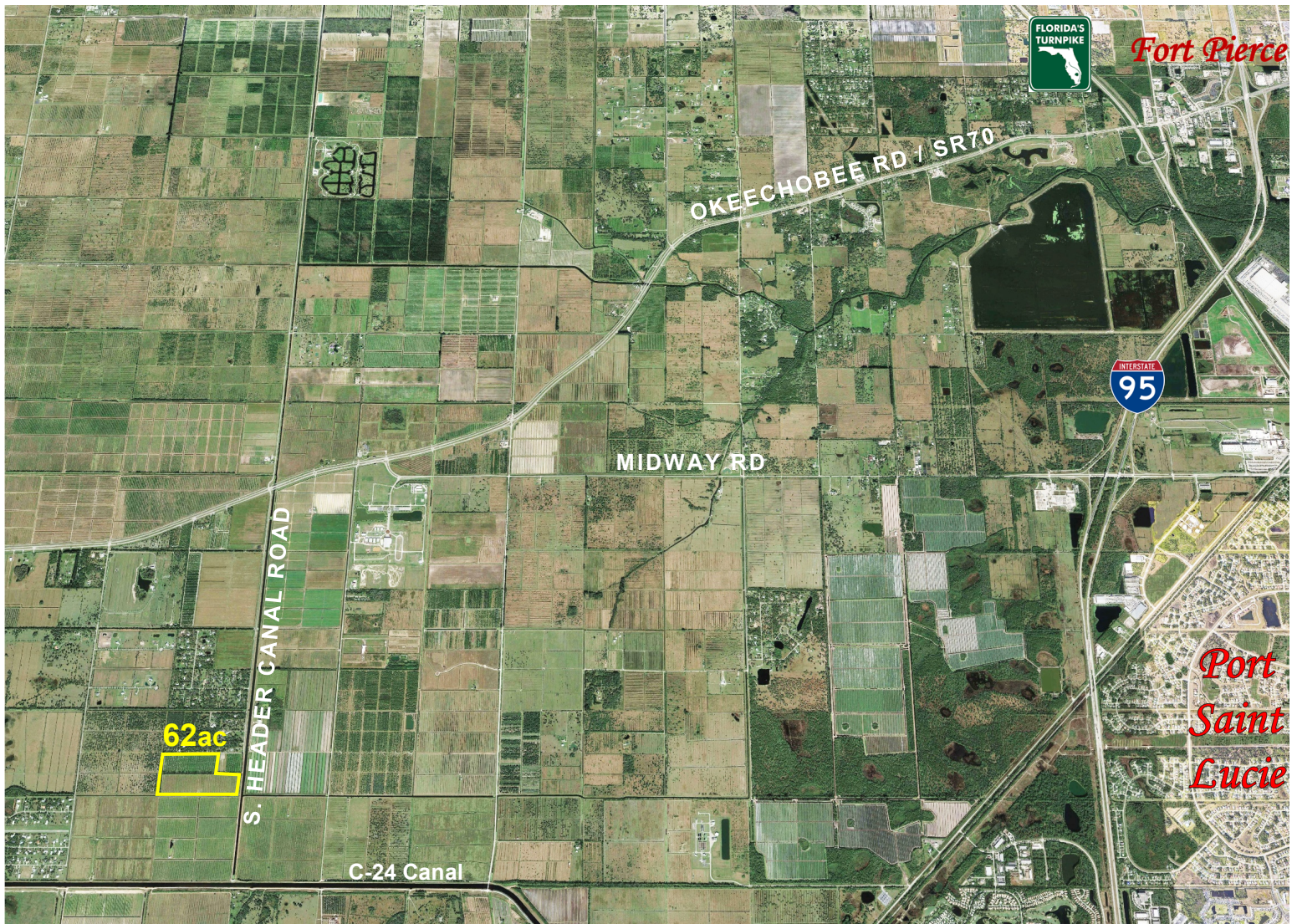


62ac AG Land

S Header Canal Road
Saint Lucie County, FL 34987

- 669ft Frontage on South Header Canal Rd
- Second Access by Easement on North Side of property
- Former Citrus Grove
- Agriculture Exempt Taxes: 2020 \$1,640.
- PID # 3214-131-0001-000-6
- MLS # RX-10596085



\$989,000.



**mark walters
 & company**
 real estate brokers & auctioneers

www.waltersco.com • email: mark@waltersco.com
 531 South US Hwy 1, Suite B • Fort Pierce, FL 34950
 Office (772) 468-8306 • Cell (772) 201-5650 • Fax (772) 497-5096